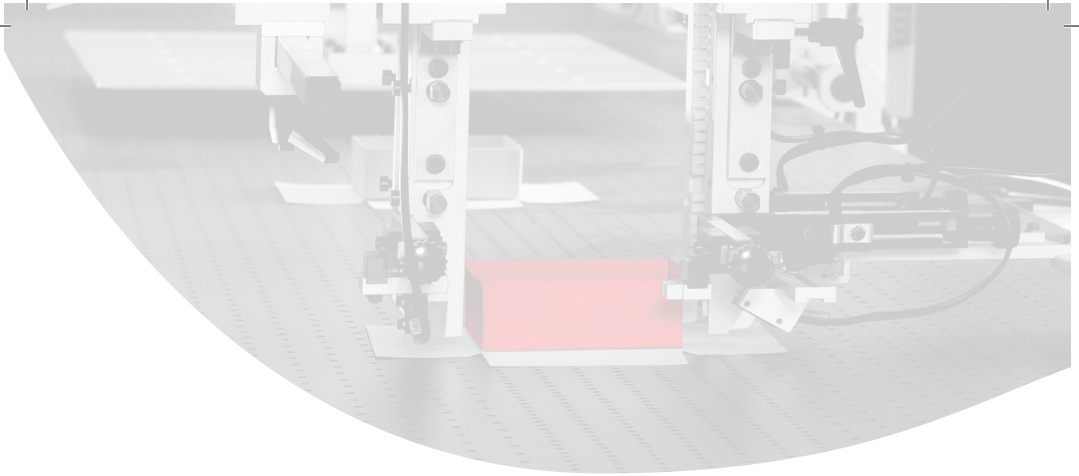


 **efko** karton®

custom-made production



www.efko.cz/en



Thanks to our experience since 1993, modern technology and flexibility, we have become a true specialist in processing carton, corrugated cardboard, paper and other components for perfect board games, card games, memory games, jigsaw puzzles, special packaging etc.

How is a game born?

A good idea is not enough by itself. It has to be given the right shape.

Our team with more than 20 years of game manufacturing experience will help you transform your idea into a quality product.



**glossy art paper 115 gsm,
neutral varnish, saddle stitch**

DATA REQUIREMENTS



GAME ON TIME?

We can start to manufacture games after you approve all data for printing. This is the point when production time starts. Please help us by sending correct data formatted to needed specifications to avoid time losses during print preparation process.

You can also get in contact with your Business Manager or Graphic designer at Efko to get templates for your game components and here are some requirements of artwork file for Boxes and game boards.

MANUAL FOR ARTWORKS / DATA

- Format: composite PDF (please keep standard PDF/X1a, PDF/X-3, or PDF/X-4)
- Image resolution at least 300 dpi (1:1)
- Colors only in CMYK, alternatively Pantone (if quoted)
- Don't add color profile, you can alternatively use profile Fogra 39
- Effects, shadows, transparency – group in one layer
- Color total can't exceed 270 % at one spot
- Dieline preview: in fifth color with stroke overprint setting on (non-printing color). There must stay visible art works without white line after we turn the overview off
- All fonts should be converted into curves – if you are not sure that your software can embed the fonts correctly into PDF
- Both inner and outer bleeds at least 3 mm (alternatively 5 mm if necessary)
- Distance of graphic and text elements away from dieline at least 4 mm (doesn't include pictures that extend to the bleed area)

Please don't send open files in formats CDR, PSD, AI, INDD etc. Files need to be always exported to pdf as stated above.

Although we check files properly, we can't be responsible for content (mistakes in grammar, spellcheck etc.).

PREPARATION PROCESS

We want our products be perfect and you satisfied and that is why we pay a high attention to your data. Please see the steps that need to be taken before production starts.

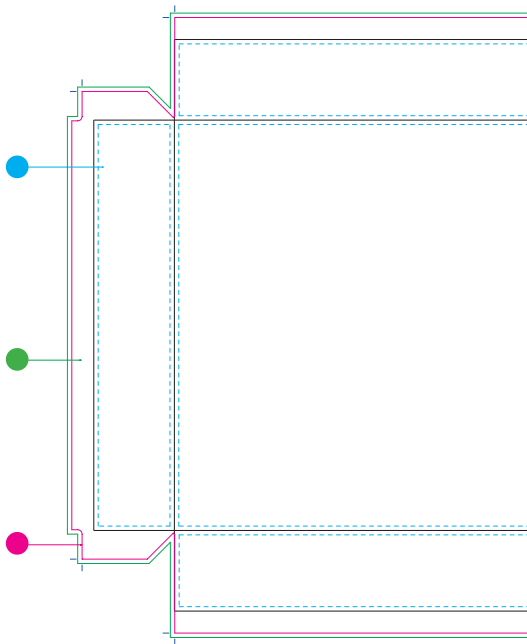
1. You deliver us data (dropbox, uploads to clouds, e-mails, CDs...)
2. We check if data are ok, printable, if punchboards are doable etc. We also check if there are not any graphic mistakes, residues, if colors match etc. This step usually takes 3-5 days if data are ok. If data must be fixed or remade then this step takes longer.
3. We prepare the data for the printer and send you print preview in pdf (preparation usually takes 1-3 days).
4. After you confirm print preview production time starts.

LID AND BOTTOM BOX

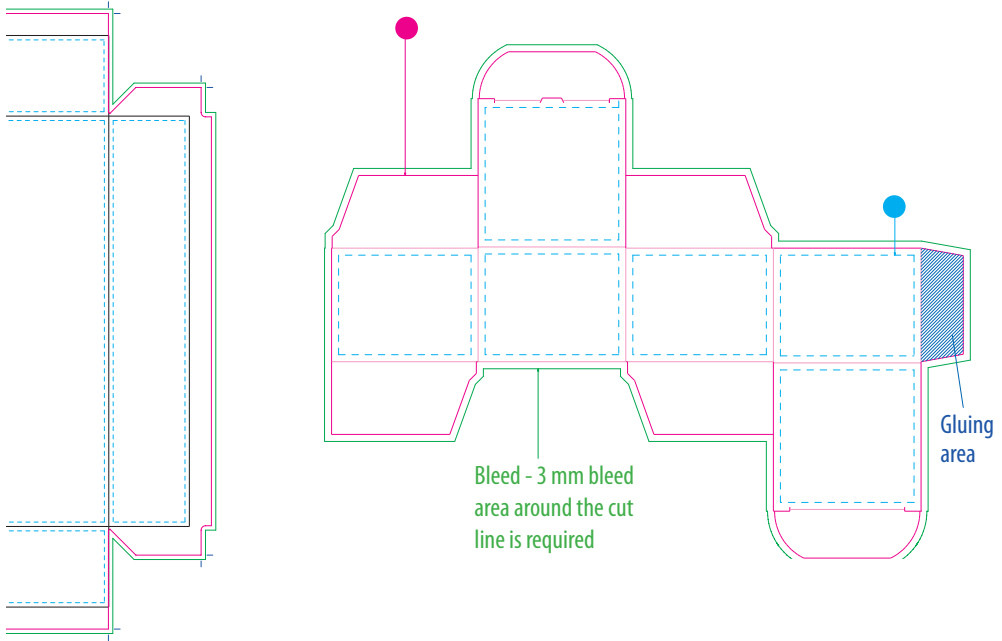
also called telescope boxes or a two piece game box

Here is box template as illustration as below, so you can paste artwork on corresponding panels:

- Margin - Keep all important text and illustrations inside the margin area (3mm away from cut line and fold line) to avoid clipping.
- Bleed - a 18 mm of bleed area is required on each side of the box, because the flaps will be wrapped to inside of the box.
- Die cut - this is how the print sheet will be trimmed.
Die cut lines must be in separate layers and hidden when file outputting.



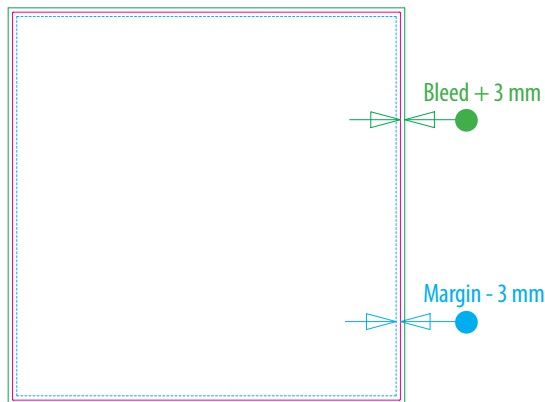
TUCK BOX – very economical option



Game Board - Efko is able to produce two types of game boards

1. Cut/uncovered edges game board

For this type is only one data requirement:



- The actual size of the game board (die cut - this is how the print sheet will be trimmed). Cut lines must be in separate layers and hidden when file outputting.
- Minimal color bleed - 3mm bleed area is required on all 4 sides.
- Margin - Keep all important text and illustrations inside the margin area (3mm away from cut line and fold line) to avoid clipping.

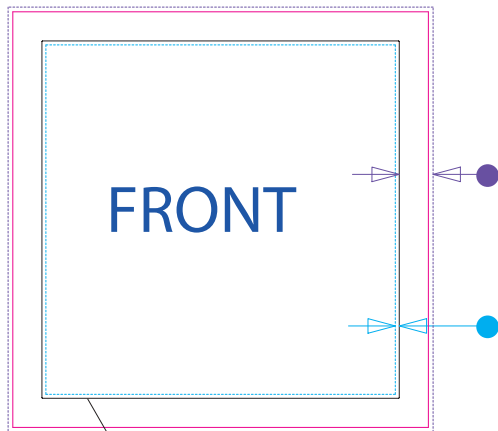
Game board can be folded (1/2, 1/4, 1/6, etc.) inside the box, helping to get a smaller box for cost saving.

For game board with wrapped edges can be groove on board – you will see on some game boards there is a groove between folding parts, this is a more cost-effective option. Since smaller grey board used inside with groove, your game board will have better duration during times of folding.

A minimum size of the game board with covered edges is 140x210 mm (one part of the board without fold). A maximum size of 850x600 mm is essential for one piece of game board.

2. Game board with wrapped edges

For this type is only one data requirement:



● Actual size of Game Board

- Minimal color bleed - 22 mm bleed area is required on all 4 sides of the cover paper, while the grey board will be wrapped inside like the box.
- Die cut - this is how the print sheet will be trimmed. Die cut lines must be in separate layers and hidden when file outputting.



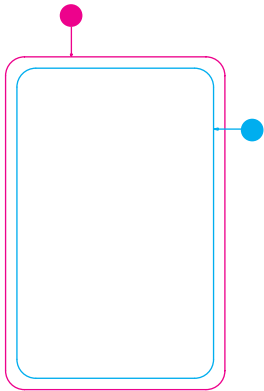
- Smaller back - the back cover must be 5 mm smaller than actual size of the game board, which is a production tolerance for sticking print sheet on the wrapped front board.
- Minimal color bleed - 3 mm bleed area is required on all 4 sides. Actual size of game board.

EXTRA SPECIFICATIONS FOR CARDS

1. The PDF files should be composite PDF version 1.3 or 1.4. Also TIFF and EPS are acceptable.
 2. Resolution of the images should be minimum 300 dpi. For the line artwork recommended resolution is 1200 dpi. Sending us lower resolution artwork means customer acceptance for the lower quality of printed artwork.
 3. Before sending file to press-room it is recommended to check the files for possible mistakes with preflight applications (e.g. available in Acrobat Professional version 6.0 or the Pitstop).
 4. The sequence of the pages in the multipage document has to represent the intended sequence of the cards in the ready deck (Please do not make facing page files nor impose cards on the sheet by your own). Please do not mix the front-sides and the back-sides in one file, please save front-sides and back-sides separately and number them in the way excluding mistake. The supplied files have to be centered to the page and all pages have to be of the same size.
 5. All used fonts should be changed to outlines or the fonts should be embedded in the document. The press room will not take any responsibility for the wrong interpretation of the fonts while RIPping caused by the embedding fonts that are not licensed for the commercial use.
 6. The objects situated on the edge of the card have to bleed at least 3 mm beyond the cut line. The die lines should be present in the file in the spot color (Pantone, HKS) with option "Overprint stroke/outline" turned on. We can take no responsibility for mistakes caused by using fonts without proper commercial license. Black filled texts should consist of black = 100%.
 7. Important text or graphic objects should be kept 3 mm away from the edge of the card (cut line). The standard cutting cards should have uniformed 3 mm white color frame around card edges.
 8. Minimal size for the text printed in the one color is 6 points. The minimal thickness of the lines is 0,1 mm. The black texts = 100% Black placed on the color background have to overprint.
 9. The percentage value of all used inks summed up together cannot exceed 280%.
 10. Cromaline can be prepared on the customer demand for additional fee.
 11. Basically we provide regular rounded corner with 5 mm radius. In some special sizes could be radius different. This will be specified with offer.
- Name the file with "front" and "back" so that we can easily understand which is the corresponding file for one card, i.e. "card_1_front.pdf" and "card_1_back.pdf".
 - You can also put all front and back files of the same card deck in a multipage pdf, and put the common back as first or last page.
 - If a file is multiply used in the same deck, you can just send one file to us with a list of file name describing quantity used for each.
 - **A certain quantity of cards will be fitted into a standard print sheet. We have various options to help you on cost saving, so you can contact your account manager to figure out the most cost-effective one for your game.**

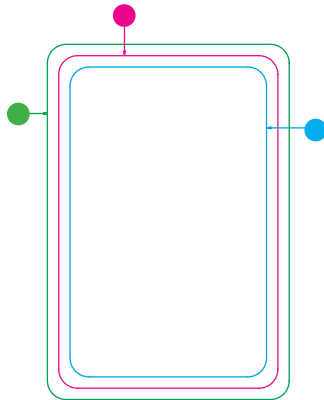
CARD TYPES:

1) non-bleed cards (cards with united frame)



- Die cut lines must be in separate layers and hidden when file outputting.
- Margin - Keep all important text and illustrations inside the margin area (a 3mm uniform frame is required!).

2) Bleed cards – more expensive option



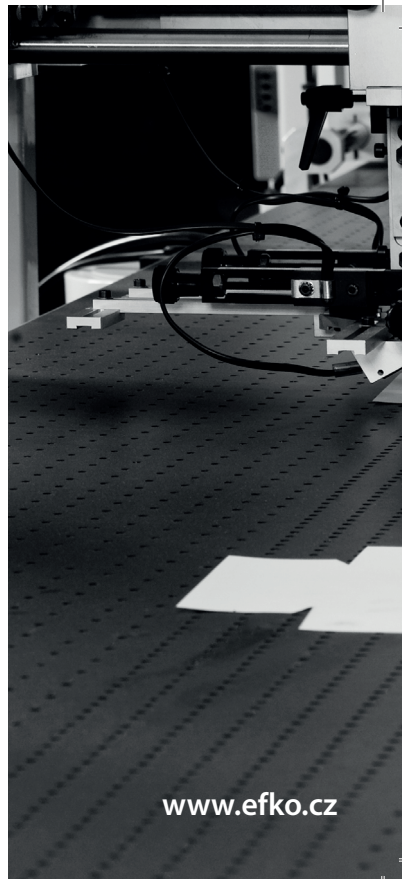
- Die cut lines must be in separate layers and hidden when file outputting.
- Margin - Keep all important text and illustrations inside the margin area (3mm from cut line and fold line) to avoid clipping.
- Bleed - a 3 mm bleed area around the cut line is required.

A lot of our products are made from paper. However, we are not indifferent to what environment our children will inherit from us. So, we care about responsible forest management. That is why we hold FSC® certificates and we are able to deliver all our paper products with this certificate.



The mark of
responsible forestry

**matte art paper 150 gsm,
neutral varnish, saddle stitch**



www.efko.cz